



All copyrights, trademarks, Intellectual property rights, patents reserved in name of IQUBX pvt. ltd and its directors. Any copying of logo, images, designs, product designs without explicit written permission of the directors of IQUBX pvt. ltd shall be a punishable offence. All the product designs are IPR protected



MODULAR GLASS DOOR & DOOR FRAME

GD01(S)
GD02 (S)
DF01



WEBSITE

www.iqubx.com





<https://iqubx.com/aluminium-glass-doors/>

Aluminium stile door with integrated handle and single / double glass

Technical Data

Main Lock Stile profile, integrated handle 138 x 40mm
 Main Lock Stile with moulding 145 x 40
 Hinge stile and rails 80 x 40mm
 Hinge stile and rails with moulding 92 x 40
 Moulding 28 x 12

Single glass 8 to 10 mm
 Double glass 6 to 8 mm x 2 nos

All components are raw mill finish and can be powder coated in any powder coat color or anodized

GREENPRO certified 6063 aluminium alloy, 100% recycled aluminium - 10% pre- consumer & 90% post-consumer

IQUBX has launched a unique aluminium glass door GD01 which provides for an **option of using single glass or double glass panels**. These glass can be clear, frost finish or lacquered and may be float or toughened as per choice. A single glass panel of 6 – 10 mm is recommended positioned in center of frame or optionally, 2 nos 6 - 8 mm glasses panels can be used for sleeker contemporary look and better acoustics.

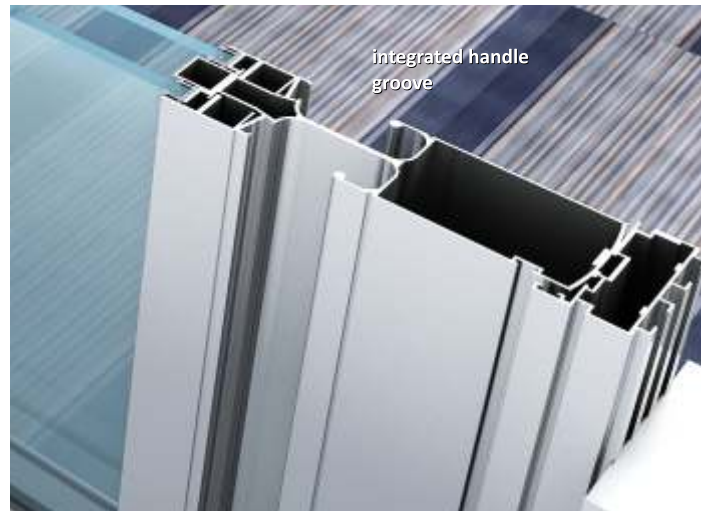
The **unique mouldings** for fixing the glass have been designed so that they **can be reversed to convert single pane door to double glass and vice-versa**.

Another unique feature of IQUBX GD01 Aluminium glass door is **integrated handle** on both side of the main stile giving it a distinct aesthetics and functionality.

This aluminium door design scores in another way as **glass panels can easily be changed without demounting** the door from the door frame

These doors can be ordered in any colour of powder coating or anodizing to match the rest of interiors

GD01 aluminium glass door has been designed keeping in mind standard hardware available including concealed or open door closer, dead locks, mortise lock and optional handles (as GD01 comes with integrated handle in stile profile)





This glass panel door, GD01 on hinges is ideal for use with IQUBX Aluminium modular door frame DF01, while it can be used with any other door frame too.

We recommend using GD01 / GD01S glass door with our Modular glass partition system GP2510, GP2512, GP2512D and GP1510 for a coordinated aesthetic interior. We also recommend using GD01 with our demountable partition system WP01P.

Key Features & Benefits

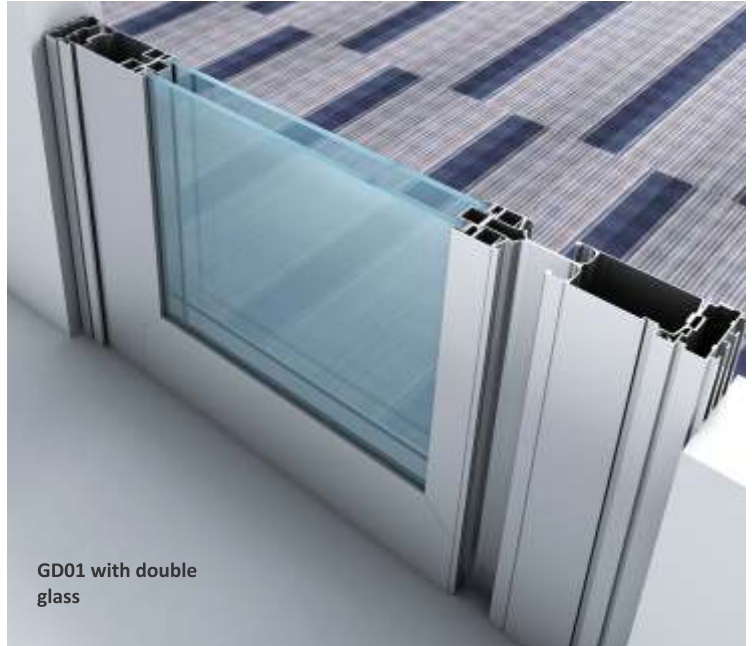
Single door for multiple glazing options like single & double glass

Handle is integrated within the section, giving a very clean aesthetics

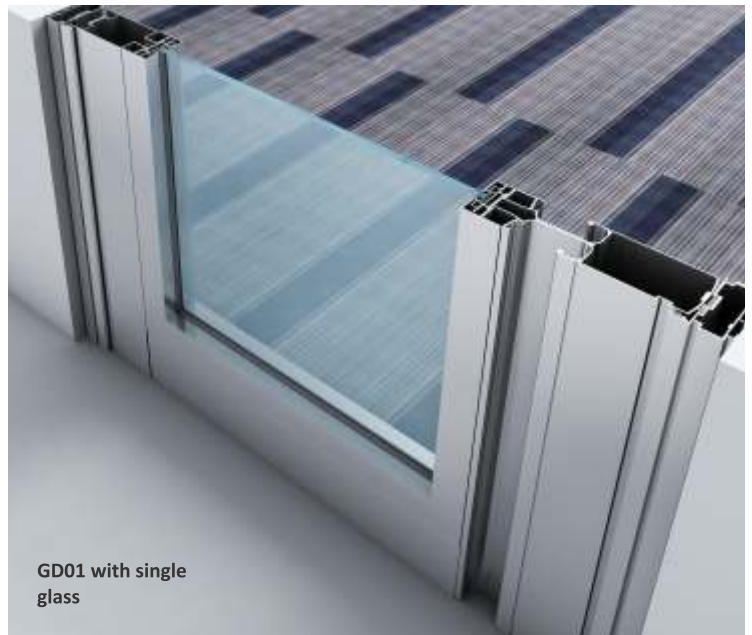
Glass panel can be changed without demounting the door

Double glass pane in the door will give enhanced acoustic insulation, especially when used with IQUBX DF01 door frame with double rubber seal

Greenpro certified by IGBC- suitable for green building certification of projects

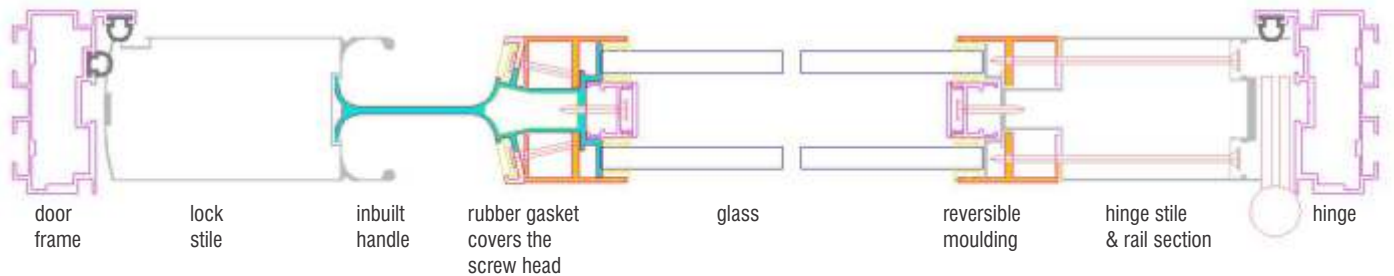


GD01 with double glass

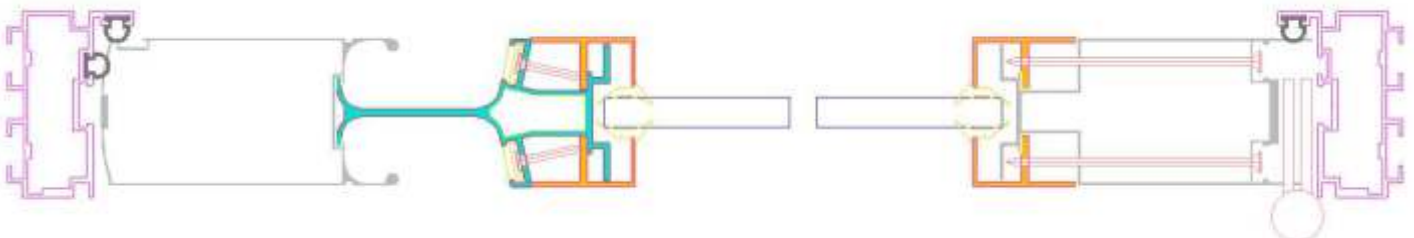


GD01 with single glass

PLAN FOR GD01 DOOR WITH DOUBLE GLASS AND DF01 DOOR FRAME



PLAN FOR GD01 DOOR WITH SINGLE GLASS AND DF01 DOOR FRAME



iqubx energy systems
budget innovative integrated

**MODULAR
GLASS STILE DOOR
GD01S**

<https://iqubx.com/aluminium-glass-doors/>

**Aluminium stile door GD01
used as sliding door**

QUBX GD01S is the sliding version of the versatile and unique GD01. It has all the features and benefits of the GD01 including multi glazing options and integrated handle.

The lock stile may be used at both ends, giving it a very distinct aesthetics. Unique feature for better acoustic insulation is that door seals have been provisioned at both the stiles.

These doors can be ordered in any colour of powder coating or anodizing to match the rest of interiors

We recommend using GD01S glass door with our Modular glass partition system GP2510, GP2512, GP2512D and GP1510 for a coordinated aesthetic interior. We also recommend using GD01S with our demountable partition system WP01P.

GD01S aluminium glass door has been designed keeping in mind standard hardware available including soft closing sliding channel.



**GD01S
ALUMINIUM GLASS DOOR
SLIDING**



MODULAR GLASS STILE DOOR GD02



<https://iqubx.com/aluminium-glass-doors/>



Technical Data

Main Lock Stile profile 75 x 40.5 mm
Hinge stile and rails 91/80 x 38.5mm

Single glass 8 to 10 mm

All components are raw mill finish and can be powder coated in any powder coat color or anodized

GREENPRO certified 6063 aluminium alloy, 100% recycled aluminium - 10% pre-consumer & 90% post-consumer

Aluminium stile door GD02 for single glass sleek, hardware compatible

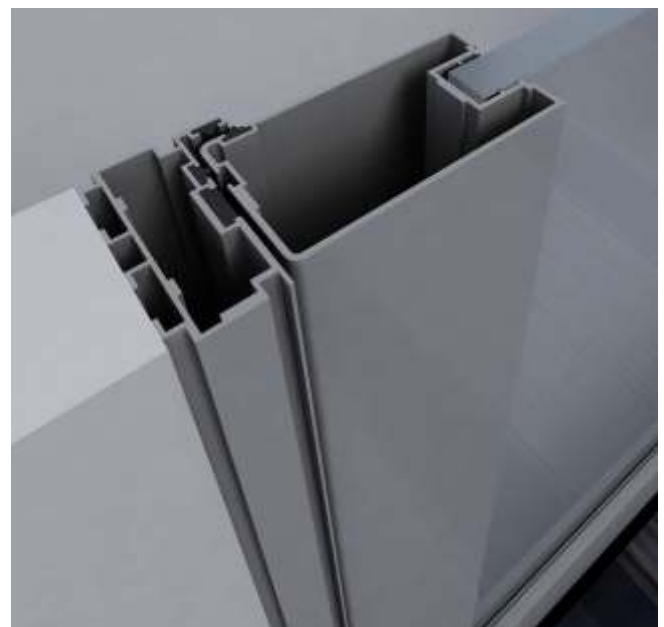
GD02 is a very sleek single glass pane modular aluminium stile door suitable for all interior applications. GD02 can accommodate single glass pane of 8mm or 10mm.

The unique design of lock stile has **provision for gasket in 2 places - on leading edge and adjacent face near the leading edge**. Though GD02 hinged door used with IQUBX DF01 door frame (which has double door seal) has superior acoustic insulation, this door can be used with any frame including wooden door frames with good acoustic insulation due to built in gasket provision. This gasket is also used for effective acoustic insulation in sliding configuration as GD02S. The first gasket in the leading edge is useful for floor machine application situation.

This aluminium door design also allows glass panels to be changed without demounting the door from the door frame. These doors can be ordered in any colour of powder coating or anodizing to match the rest of interiors.

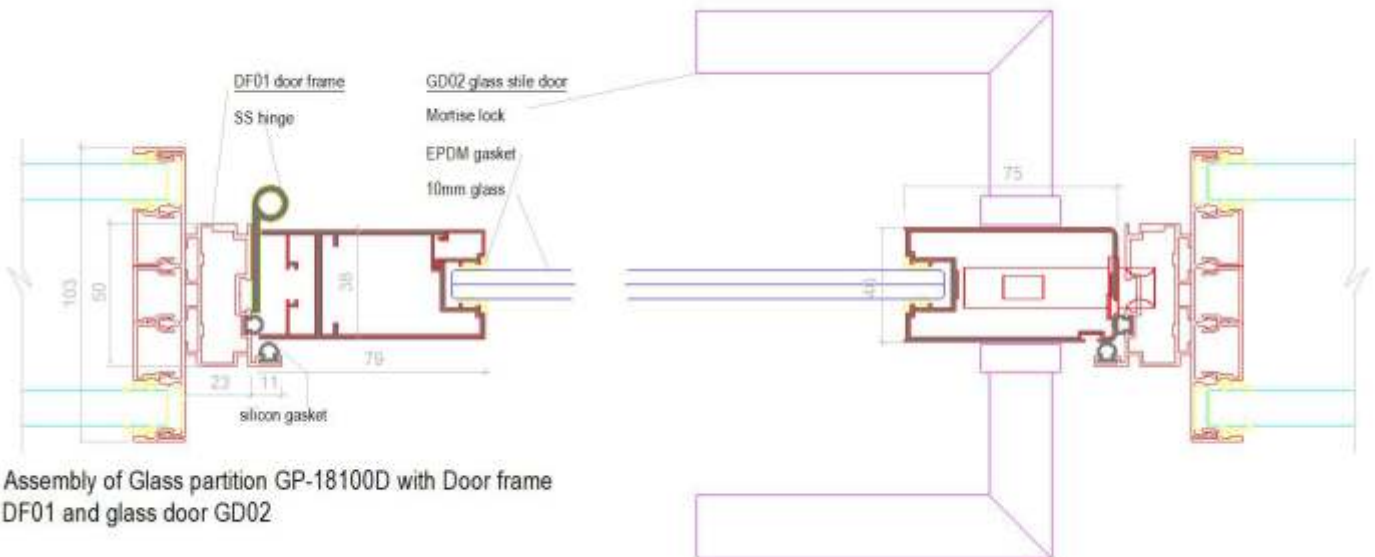
We recommend using GD02 / GD02S glass doors with our Modular glass partition system GP2510, GP2512, GP2512D, GP18100 etc and demountable partition WP01P for a coordinated aesthetic interior.

GD02 aluminium glass door has been designed keeping in mind standard hardware available including concealed or open door closer, dead locks, mortise lock and handles, while GD02S aluminium glass door can be used with soft closing sliding channel.





GD02S is the sliding version of this system, and may have the lock stile on both sides. The leading edge of the lock stile has a groove for the gasket to help the sliding door close against a surface. Soft closing fittings can be used with this system.



Assembly of Glass partition GP-18100D with Door frame DF01 and glass door GD02






MODULAR ALUMINIUM DOOR FRAME DF01

<https://iqubx.com/aluminium-door-frame/>

Technical Data

50 x 23 mm
 rebate of 11 mm
 Double grooves of 4 mm
 Double rubber seal for superior acoustic insulation
 Can be used with glass partitions, demountable, gypsum or wood partitions or masonry walls too

All components are raw mill finish and can be powder coated in any powder coat color or anodized

GREENPRO certified
 6063 aluminium alloy, 100% recycled aluminium- 10% pre-consumer & 90% post-consumer

Aluminium universal door frame DF01 for use in glass, solid and masonry walls partitions, double door seal

This is a versatile and multipurpose door frame. This Door frame design can be used with all modular aluminium glass partition & demountable partition systems, as well as in gypsum partition, masonry Walls etc. This can ensure uniformity of detail and aesthetics on site.

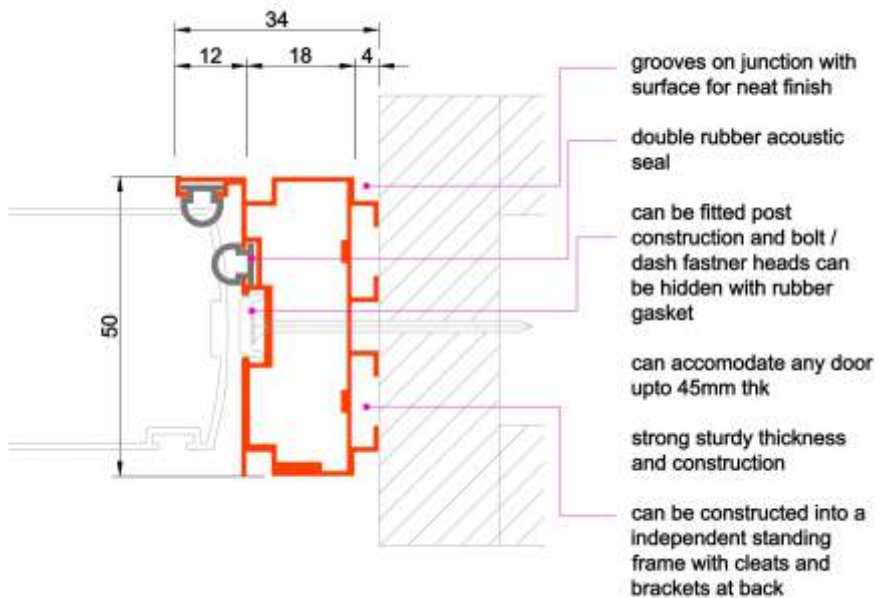
It is recommended for use with IQUBX GP2510, GP2512, GP2512D and WP01P. **This door frame can be used with all type of doors including frameless glass doors, Aluminium stile door, wooden doors etc.**

The unique door frame design idea has integrated main body and rebate profile, so that it **can be used as an independent door frame**, while it is sleek enough to be used with glass and solid partition systems. This door frame details has inbuilt double slots for fixing of components of the door frame with the help of brackets, making a strong mitered joint.

This design has the advantage that it **can be fixed post-construction with masonry walls & partition with help of expansion bolts & screws**. It is also very easy to uninstall the complete frame without damaging the fenestration

The frame has **double door seal for high acoustic insulation**

Due to the door frame details with two 4 mm grooves on each side, there is no need for architrave trims





Published April 2022



APPOINTING
DISTRIBUTORS
ALL OVER INDIA
& OUTSIDE

IQUBX PVT LTD
Plot No 22, khasra no 27/10,
Industrial Area, Nangli Sakrawati,
Near Campa Cola Factory,
Najafgarh, New Delhi, 110043

www.iqubx.com
<https://www.facebook.com/iqubx/>
<https://www.linkedin.com/company/iqubx/>
<https://www.instagram.com/iqubx/>

Modular Green Building Furniture & Interior Systems

Mktg +91 9999001967, 8506074444, 7065444402 | info@iqubx.com

The only certified Green Products in their categories in India

We design customized solutions

Modular Aluminum Interior products

Glass Partition Systems - Single, Double Glazed, DGU Glass
Demountable Wall Partition & Paneling Systems
Doors and Door Frames
Free standing office cabin partitions & booths
Dry Cladding Readymade Room Partition Walls (Drywall - Stone & Tiles)
Modular Baffle Ceiling Systems (PATENT applied)

Ceiling Trap Doors

Work Stations, Modular table Leg Systems, Modular Partitions, Popup Boxes
Misc: Skirting Board, Chair Rail, carpet transition profile, corner guard

Modular Aluminum Electrical products

Floor Boxes, Floor Junction Boxes (PATENT applied), Raceways
Floor Raceways Trunking Systems
Cable Distribution & Termination - Open Frame Racks - 2 & 4 Poles, D Ring



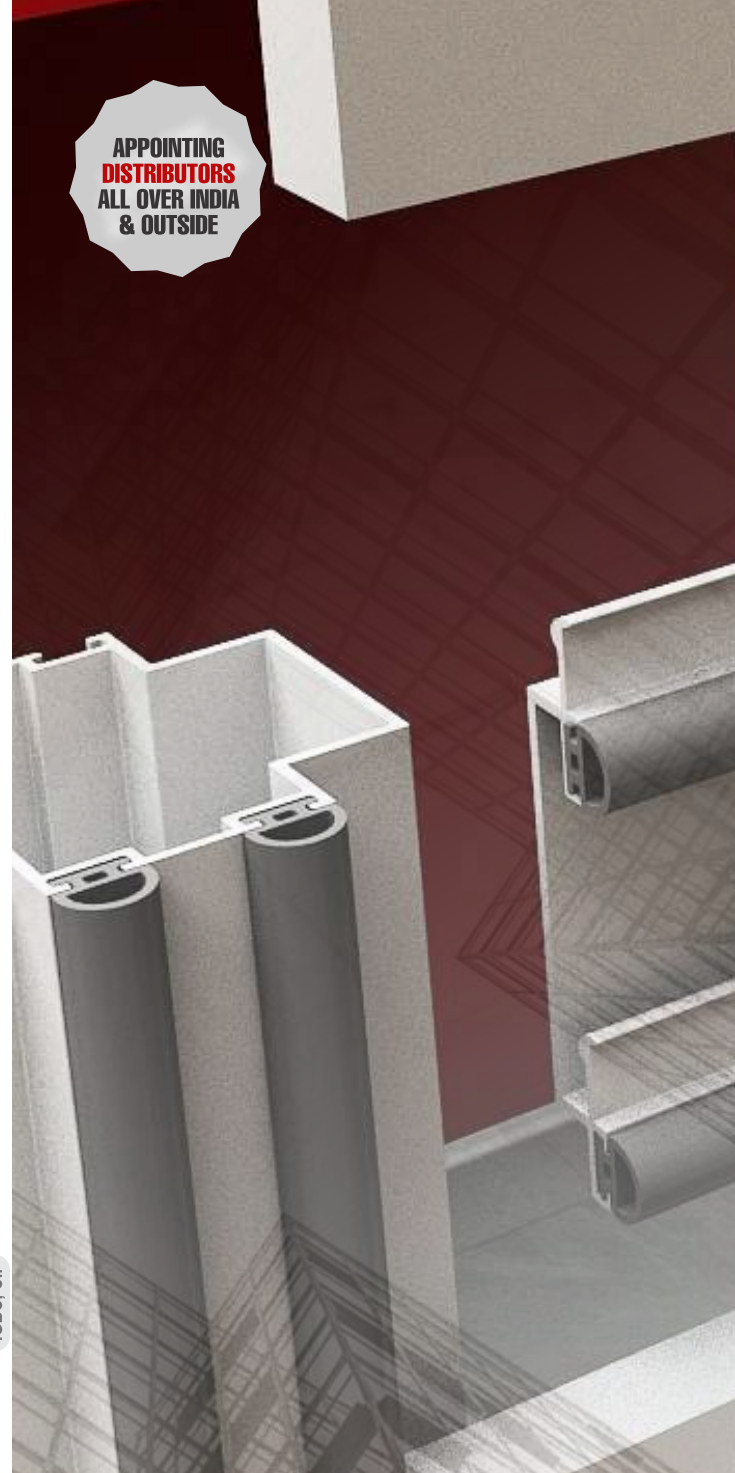
certified by
IGBC, CII

High performance & Functionality **Ultrafast installation** Minimum Human Labour
Highly customizable Modifiable **Relocatable** Minimum components

distributor



view auth
distributor
list online



DESIGNERS & MANUFACTURERS
OF LARGEST NUMBER OF
GREEN CERTIFIED
MODULAR FURNITURE &
INTERIOR SYSTEMS IN INDIA

www.iqubx.com



All copyrights, trademarks, Intellectual property rights, patents reserved in name of IQUBX pvt ltd and its directors. Any copying of logo, images, designs, product designs without explicit written permission of the directors of IQUBX pvt ltd shall be a punishable offence. All the product designs are IPR protected