

DEMOUNTABLE
WALL
PANELING
WP01
WP02

DEMOUNTABLE
WALL
PARTITION
WP01P
WP03P



www.iqubx.com



All copyrights, trademarks, Intellectual property rights, patents reserved in name of IQUBX pvt ltd and its directors. Any copying of logo, images, designs, product designs without explicit written permission of the directors of IQUBX pvt ltd shall be a punishable offence. All the product designs are IPR protected





connect with us on
Linkedin



follow our page on
Linkedin



follow & like us on
facebook



follow us on
Instagram



give us a review on
google



subscribe our
youtube channel



*All copyrights, trademarks,
Intellectual property rights,
patents reserved in name of
IQUBX pvt ltd and its directors.
Any copying of logo, images,
designs, product designs without
explicit written permission of the
directors of IQUBX pvt ltd shall
be a punishable offence. All the
product designs are IPR
protected*



**Innovative
Green Certified
Modular
Interior
Systems**

www.iqubx.com



A few of our prestigious clients

AECOM



Tech Mahindra



SIEMENS



WAVE One



Exports to Canada, Maldives, Nepal

innovative | quick to install | highly customizable

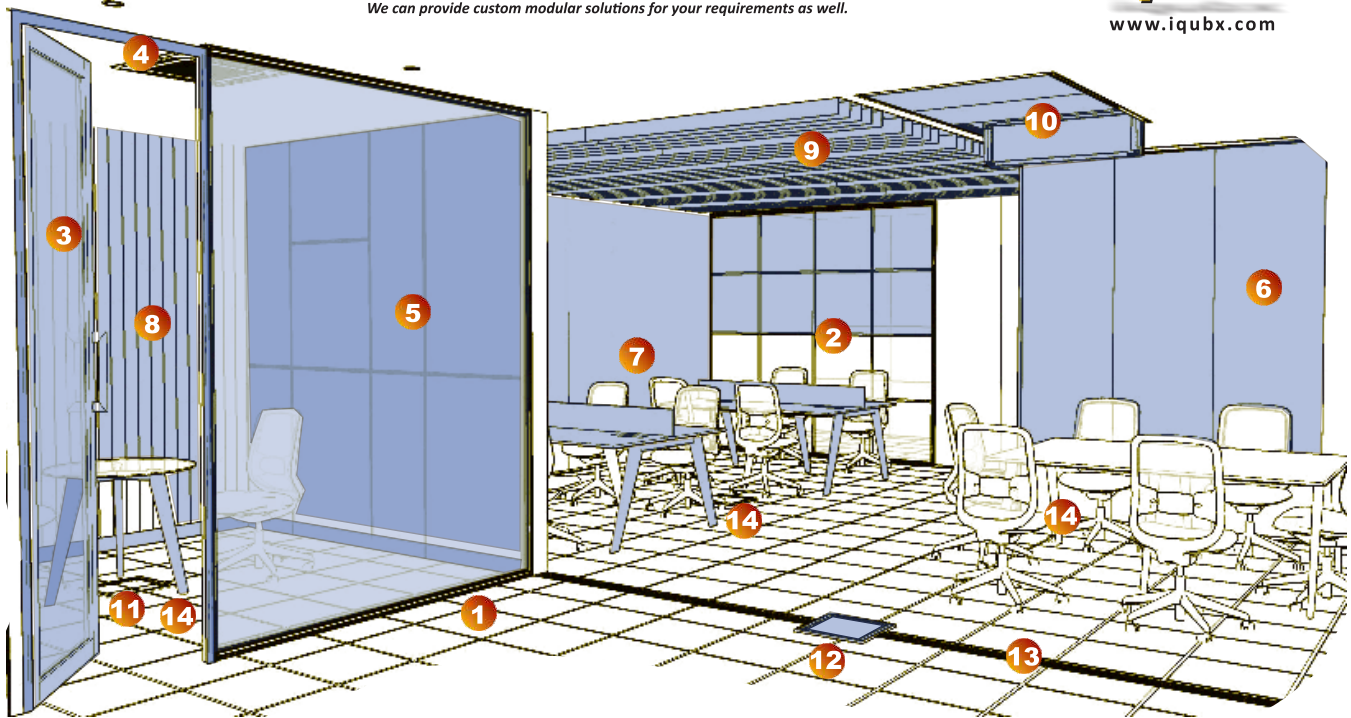
+91 9999001967, 8506074444

Largest number of GREEN CERTIFIED MODULAR INTERIOR SYSTEMS IN INDIA

Very innovative and green certified, IQUBX modular interior systems can help create offices ultrafast with minimum human labour and very economic cost. These systems can be easily modified, making such spaces very adaptable and flexible to cater to changing future requirements. We can provide custom modular solutions for your requirements as well.

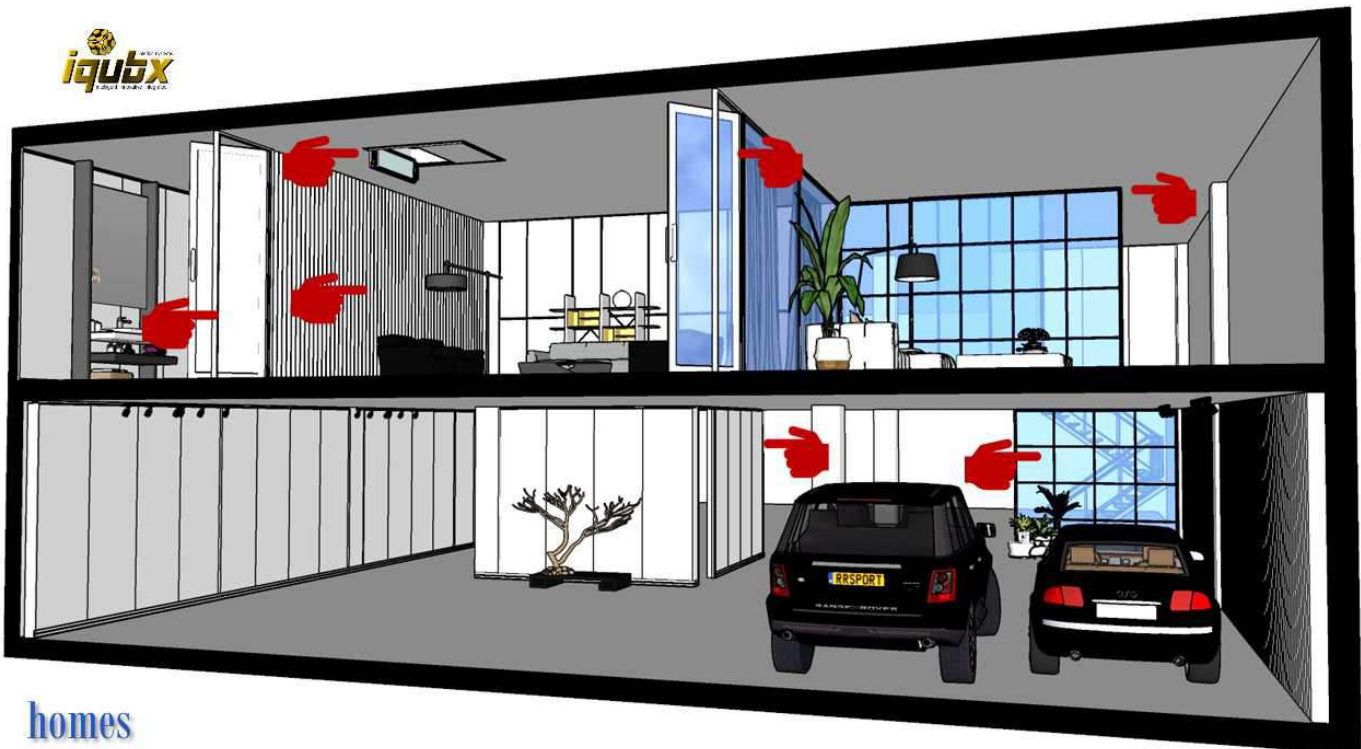


www.iqubx.com



IQUBX for COMMERCIAL OFFICE & CO-WORKING SPACES

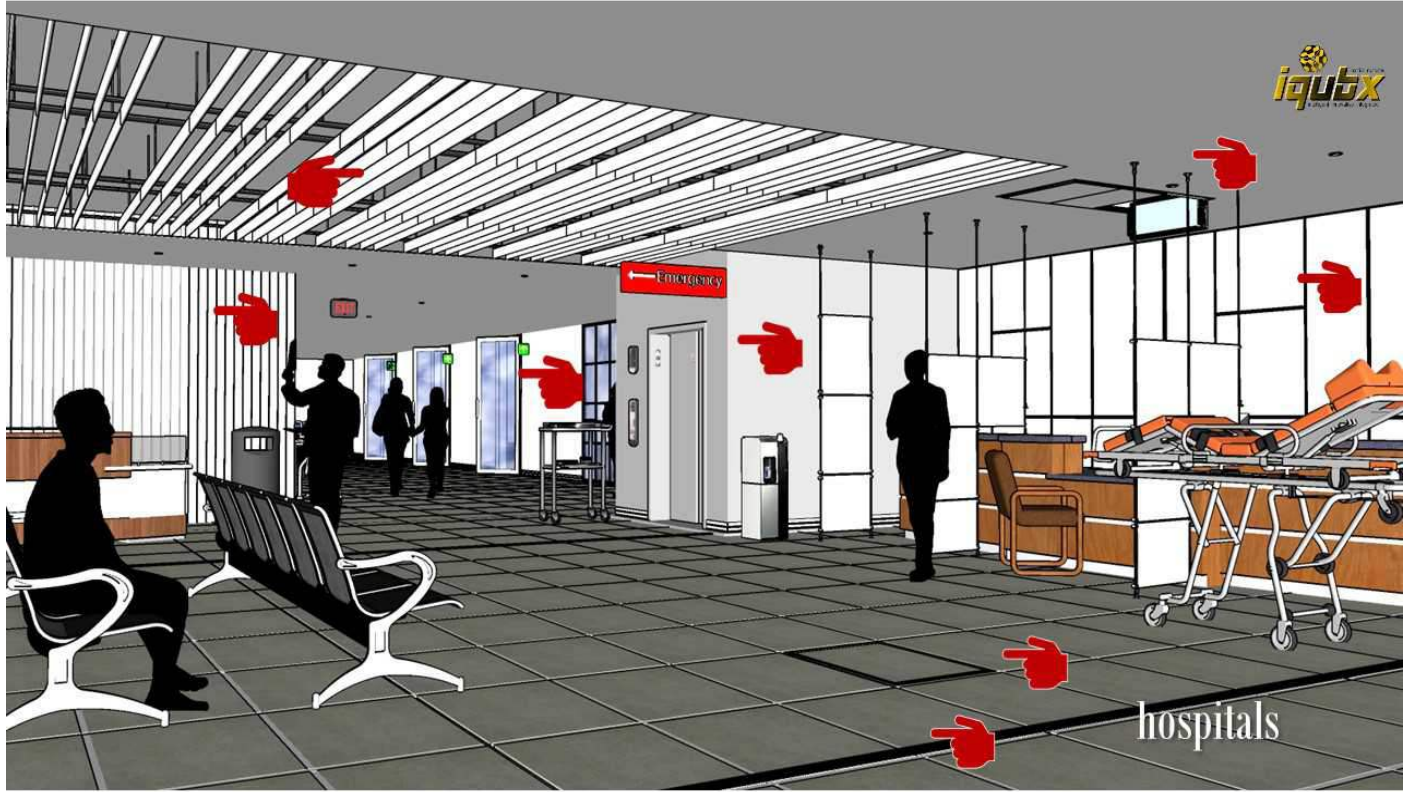
- 1 Glass partition 2 Grid glass partition 3 Glass stile door 4 Modular Door frame 5 Demountable wall partition 6 Dry wall stone / tile / paint partition
- 7 Wall paneling 8 Aluminium wall paneling 9 Baffle ceiling 10 Ceiling trap door 11 Floor junction box 12 Floor box 13 Raceway 14 Modular table leg system



homes

Applications

Offices | Residences
Hospitals | Institutes | Universities
Retail | Hotels
Smart Cities | Airports
Railway & Metro Stations





<https://iqubx.com/wall-paneling/>



WEBPAGE

14 x 15 mm add on grid system, modular, modifiable, can be used in existing glass

Technical Data
Top channel 14 x 13
Base plate 24 x 9
Powder coat / Anodized

For fixing any 10-12 mm material panel like gypsum board, prelam particle board, soft board, lacquered glass pasted on back ply, clear glass etc

GREENPRO certified 6063 aluminium alloy, 100% recycled aluminium - 10% pre-consumer & 90% post-consumer

This snap-fit paneling system for walls is a very versatile system which allows different material panels to be installed quickly on existing walls and partitions. The wall panel material can be any 10-12 mm thick material panel like Gypsum board, calcium silicate board, clear glass, lacquered glass, wood, pre-laminated board or ply, soft board etc.

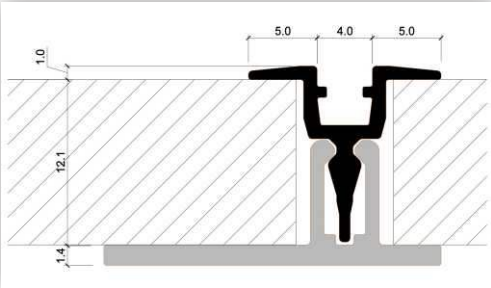
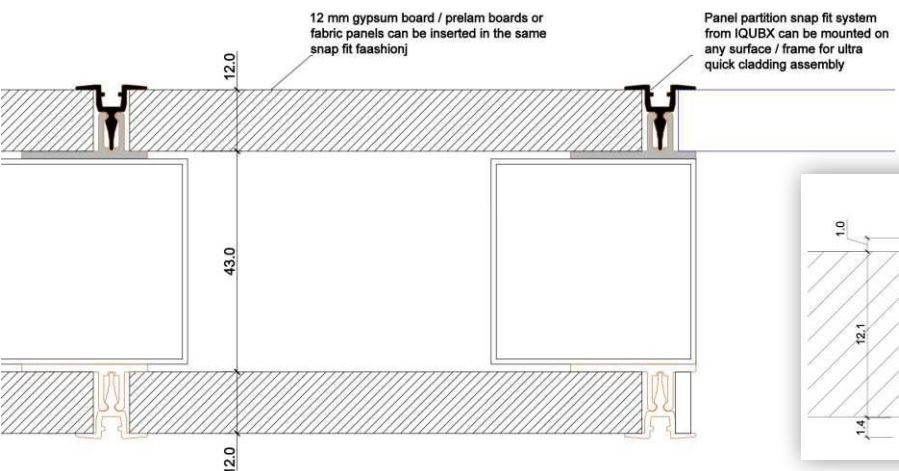
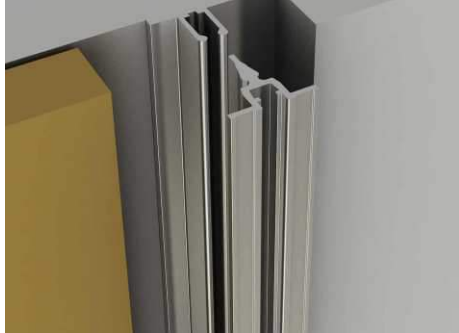
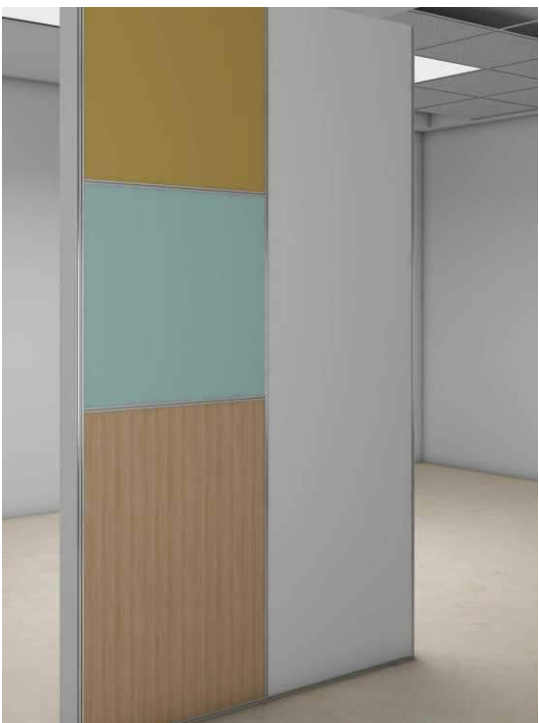
The unique fixing system has a base channel which can be fixed on any substrate with screws to a location which is one edge of the receiving wall or partition. The pre-sized panel is placed and the second base channel is placed with flange underneath the panel. The earlier base channel (fixed first) is plugged with snap-fit male channel with flanges to fix the wall panel from one side. The second panel is placed and the third base channel fixed in continuity. The second male channel is now fixed and the fixing continues.

The front visible channel has just 5mm wide flanges on both side and a 4mm groove in between, It can be powder-coated or anodized as per site requirements.

This system allows the fixing of wall panels at a very high speed on site and can cover over 1000 sqft in a single day using just two manpower.

Any panel can be changed for want of change of material finish, repair, maintenance etc. Carefully designed and installed system can even allow creation of fenestration like a clear glass fixed window in cabins at any time.

It can be paired with aluminium channels and clad from both sides to create a partition system in no time as well.





<https://iqubx.com/wall-paneling/>

Technical Data WP01

Main post section 25 x 44
 Main rail with hook system 12 x 53
 Hook section 5 x 22
 panel thk 6 to 18 mm
 Typical paneling thickness 38 mm

raw mill finish / powder coated

GREENPRO certified 6063 aluminium alloy,
 100% recycled aluminium - 10% pre-consumer & 90% post-consumer



WEBPAGE

KEY FEATURES

Designed for **quick install & uninstall** / relocate very easily

Structurally sound and can take desired loads

Removable panels allow access to embedded services for maintenance or modification with ease e.g. quick installation of a new switch board or removing one

Removable **panels can be easily changed** e.g. quickly installing glass board or a soft board instead of a laminated panel

For partitions, it has **continuous cavity to allow insulation pads** (for effective acoustic insulation) and any number of **vertical electric conduits** without any **cutting of frame**, even post-installation

25 thk framing for panels 6 to 18mm, quick install, removable panels, continuous cavity in frame for services

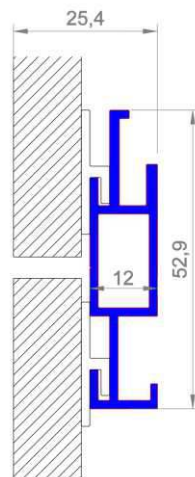
WP01P is a DEMOUNTABLE PARTITION WALL, GREENPRO (by IGBC, CII), structural aluminium frame and panel wall partition system based on **WP01 wall paneling system**.

WP01 frame work can be simply doubled and fixed together to generate **WP01P** partition system. **Therefore, WP01 system can be used as paneling as well as partition system.** Very quick install, it has unique features of removable panels and continuous cavity for acoustic insulation and electric conduits.

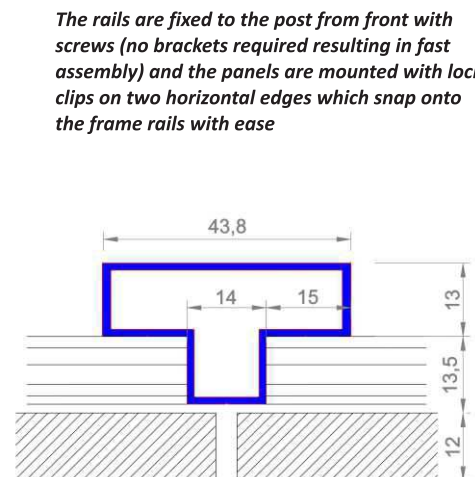
It is a post and rail framing system. The engineered post and rails are made of 6063 aluminium alloy and the **panel skins made out of 6 to 18 mm thick edge banded pre-laminated particle board, or MDF, or veneered ply, or soft board or 4mm glass board pasted on ply.**

The rails are fixed to the post from front with screws (**no brackets required resulting in fast assembly**) in any configuration as per design to make the frame work. The load-bearing frame is fixed in plumb and line and the panels are mounted with lock clips on two horizontal edges which snap onto the frame rails with ease.

This allows **easy installation and removal of the panels** at any time providing 2 distinct functionality. First is that, **panels can be removed anytime for accessing and maintaining the services running inside the partitions.** Secondly, **they can be replaced with other design of panels at any time.** This system can save an enormous lead time and labor cost. This aspect can also make the workflow on site faster, as paneling or partitions need not be withheld for services installation



SECTION DETAIL



PLAN DETAIL - PANELING

The rails are fixed to the post from front with screws (no brackets required resulting in fast assembly) and the panels are mounted with lock clips on two horizontal edges which snap onto the frame rails with ease



Paneling work done in office of Prime minister of Nepal office using IQUBX WP01 paneling system



The panels can be snap fitted on to the frame very fast





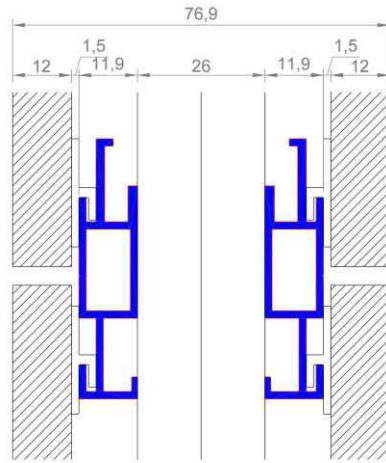
<https://iqubx.com/modular-aluminium-demountable-partition-wall-system/>

Technical Data WP01P

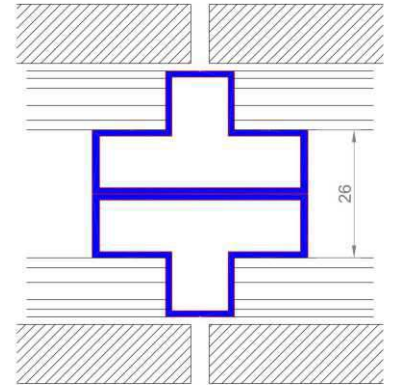
- Main post section 50 x 44
- Main rail with hook system 12 x 53
- Hook section 5 x 22
- panel thk 6 to 18 mm
- Typical partition thickness 75 to 100 mm

raw mill finish / powder coated

GREENPRO certified 6063 aluminium alloy, 100% recycled aluminium - 10% pre-consumer & 90% post-consumer



SECTION DETAIL



PLAN DETAIL - PARTITION

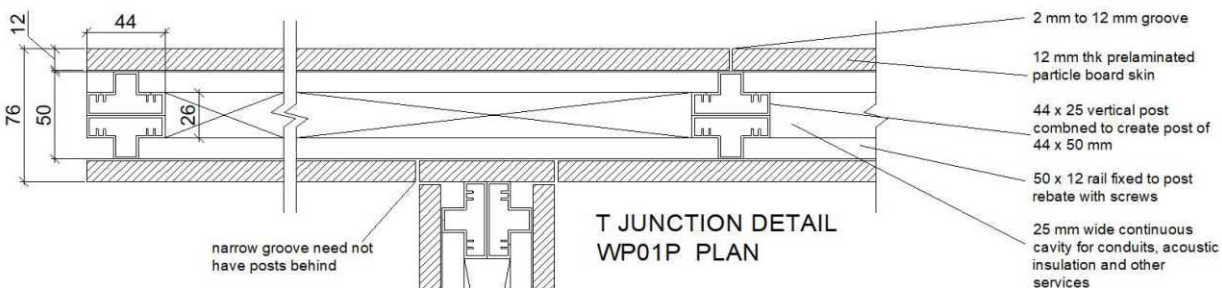
50 thk framing for panels 6 to 18mm, quick install, removable panels, continuous cavity in frame for services and acoustic insulation



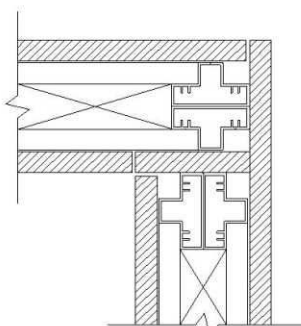
In case of partition, the rails are fixed on both faces of the posts creating a **continuous vertical cavity of 25mm between the rails, which can be used for continuous acoustic insulation and electrical conduits, other services**, thus eliminating any need to drill holes to pass conduits or services. In fact, conduits can be put at any time even after the entire partition is complete, making it very easy for modification of electrical system and point locations in a project

A uniform vertical and horizontal groove from 4mm to 12mm is possible. Zero groove should be avoided as panels won't align.

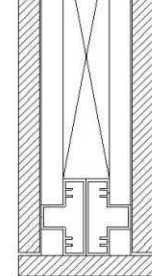
Typical thickness of WP01P is 75 mm with 50mm framing, 25 mm continuous cavity, 12mm panels skin on both side. WP01P can also be of 100 mm with the two post frames having an intermediate 25 x 40mm vertical aluminium channel and 50mm continuous cavity.



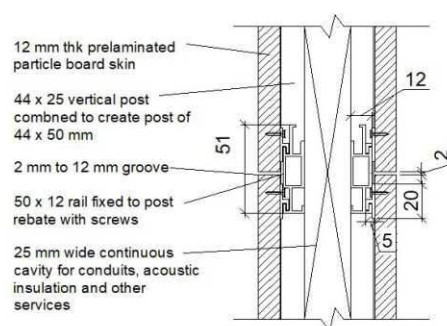
T JUNCTION DETAIL WP01P PLAN



CORNER DETAIL WP01P PLAN



END DETAIL WP01P PLAN



WP01P SECTION

skin can be any 12 mm thk or other thickness material like prelaminated particle board, laminated ply or MDF, lacquered glass pasted on mdf, soft board etc



DEMOUNTABLE WALL PANELING WP03P



<https://iqubx.com/modular-aluminium-demountable-partition-wall-system/>

50 thk framing for panels 6 to 18mm, quick install, removable panels, continuous cavity for services and acoustic insulation

Technical Data WP03P

- WP03Pa post 44 x 50 mm
- WP03Pb rail 60 x 9 mm
- WP03Pc hook 25 x 10 mm

Typical partition thickness from 78 to 104mm

raw mill finish / powder coated in any color

GREENPRO certified
6063 aluminium alloy, 100% recycled aluminium - 10% pre-consumer & 90% post-consumer

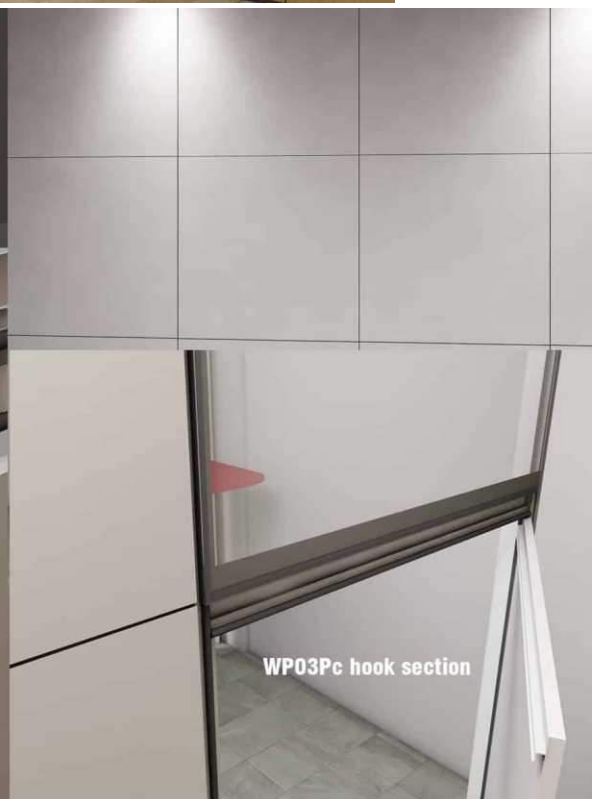


WEBPAGE

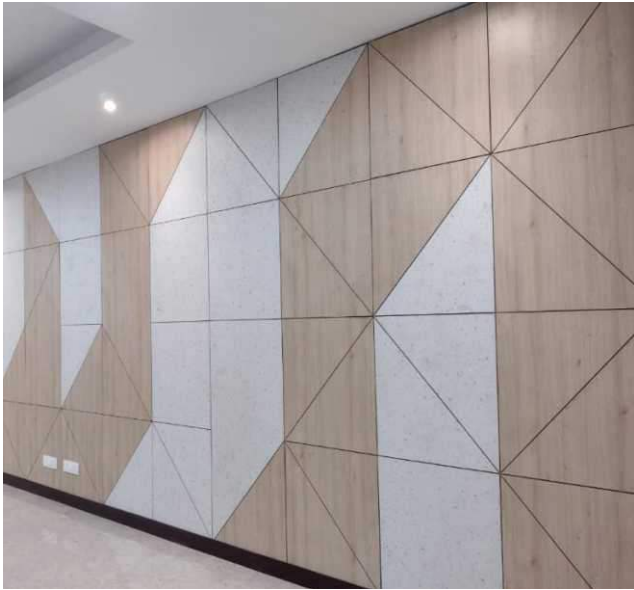
Removable panels can be easily changed e.g. quickly installing glass board or a soft board instead of a laminated panel

WP03P is a partition system based on WP01P. This is a dedicated partition system. For paneling, WP01P can be used in conjunction with this system with exactly the same aesthetics and look.

- * Post and rail with panels modular construction
- * Very fast to install and Very cost effective
- * Continuous cavity for conduits and acoustic insulation
- * Panels fixed with continuous gasket for acoustic insulation
- * Anytime Changable panels with lot of options like Prelaminated board, laminated MDF, lacquered glass, soft board, cork board - allows post-construction flexibility as well as access for maintenance of embedded services



**IQUBX WP03P
DEMOUNTABLE
WALL PARTITION SYSTEM**

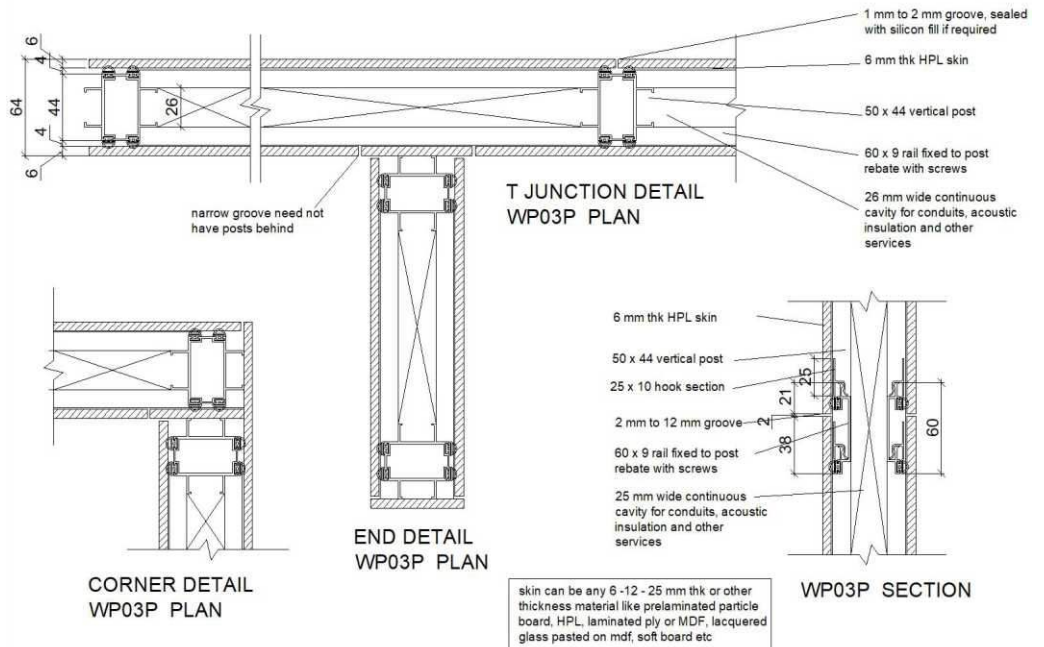


The demountable paneling and partition system used in office of Prime minister of Nepal

WP03P is newer version of WP01P and meant only for partitioning. It has some features in addition to WP01P. However, both the partitioning systems can be used on any site.
Some additional features over WP01P
 Easier assembly and locking panels
 Better acoustics - **integrated gaskets all around the panel**

Total thickness of partition is about 79mm with 50mm post & 12mm thick panels on both sides, with 2mm gap on both faces for rubber gaskets.

Continuous vertical cavity of 27mm is created between the rails. A uniform vertical and horizontal **groove from 0mm to 6mm** is possible. In case a vertical panels of full heights are used, no groove needs to be provided



Rails are fixed from front with screws, saving time



This also creates a cavity for conduits and other services



The skin is fixed with help of hook section



DRY WALL CLADDING PARTITION WALL USING STONE & TILES FOR WET AREAS DWP01

<https://iqubx.com/dry-wall-cladding-room-partition/>



IQUBX dry stone cladding ready made room partition walls can be used to partition any interior, including offices, homes, hospitality projects like hotels, banquet halls, malls, hospitals, Institutions like schools and colleges as well as industry & any other project where high quality finish and time is valued. **This dry ready-made walls can be used in wet areas like kitchens and toilets as well as dry areas like rooms and halls.** Being modular in nature they can be installed and removed easily, therefore, they are ideal for temporary extension structures. The same structure can later be used elsewhere.

drywall cladding system for stone, tiles, bison board etc, used with IQUBX open frame structure to create drywall partitions with removable cladding

In a way, it is a high performance modular prefabricated wall with stone, tile cladding or paint finish & replaces traditional masonry brick or block walls in a building. This modular system has **several advantages over traditional masonry, including, far less labour cost, ease and speed of installation, superior finish & detail, re-usability.**

One of the best advantages of this modular dry cladding system is the ease of **post-construction access to embedded services like plumbing, electric and HVAC** etc, due to removable finishing panels. These partitions can be acoustically treated also to create a very safe & quite environment.

Labor cost is minimized & a very short construction time with high quality detailing & finish can be achieved. This kind of dry wall technique can also provide flexibility for future changes to the layouts.



Technical Data

Panels - 18mm stone, tiles pasted on base board, HPL, bison board

Open Frame of OFRa 50x50 engineered section and OFRb 25x38

DWP01a base channel with skirting 47x20

DWP01b 68 x 31 and top fixing channel

DWP01c 39 x 40

DWP01d 35x40 horizontal fixing channel top finishing channel

DWP01e 4x10 top finishing channel

All components are raw mill finish and can be powder coated in any powder coat color or anodized

GREENPRO certified 6063 aluminium alloy, 100% recycled aluminium - 10% pre-consumer & 90% post-consumer



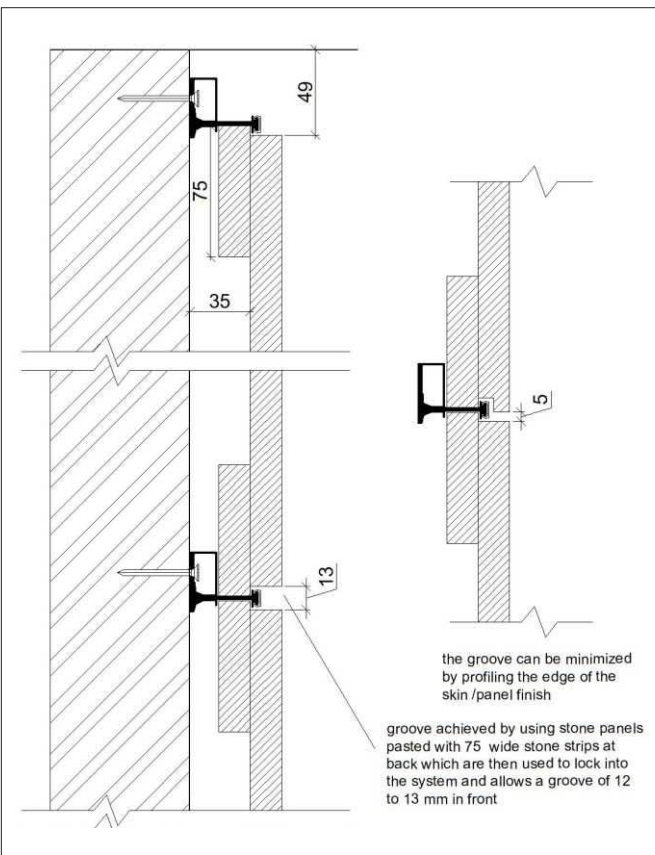
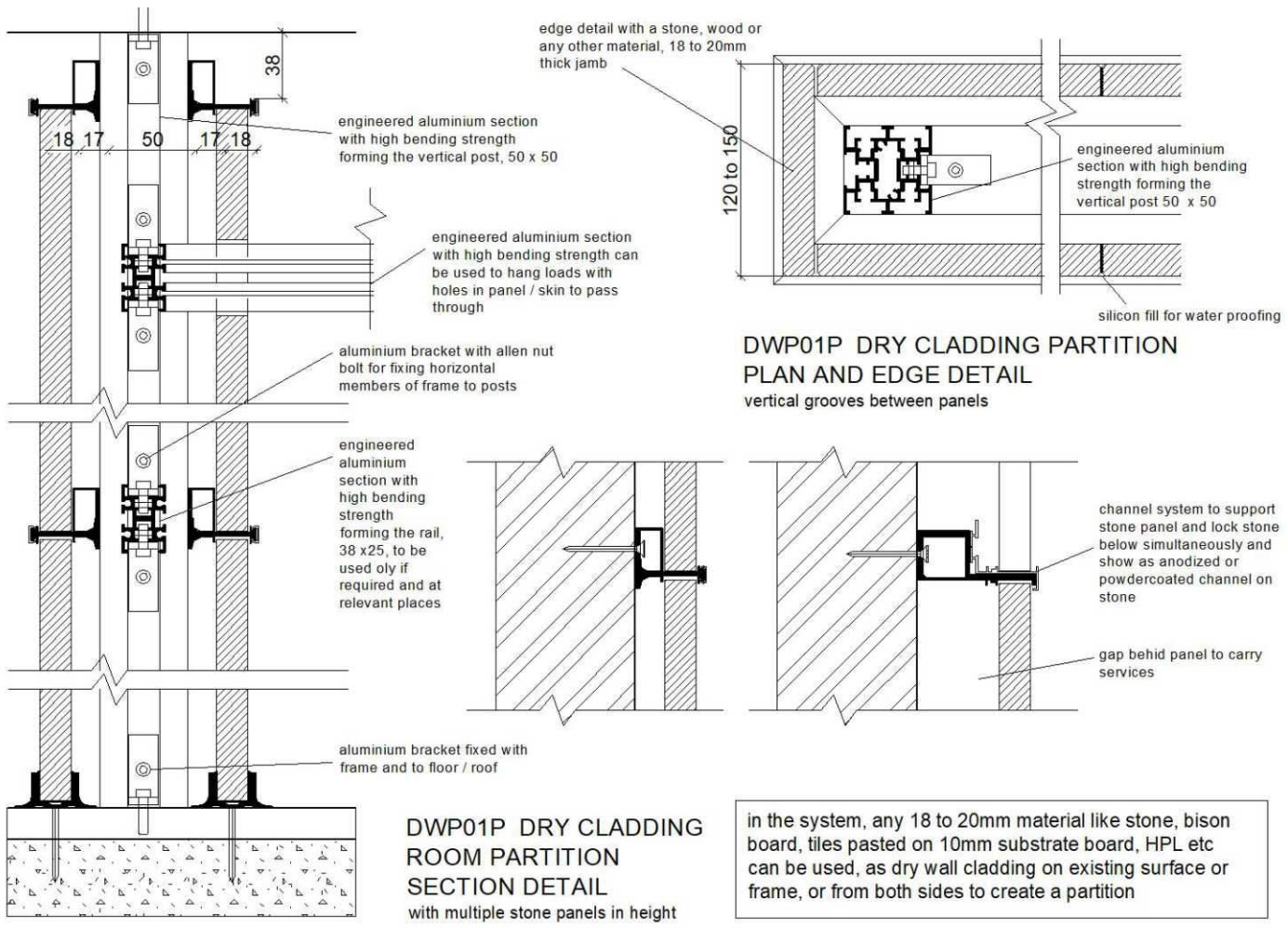
Cladding system is mounted on IQUBX OFR modular open frame modular structure system, made with Aluminium engineered sections of high tensile & bending moment strength, and functionality of modular joinery with Allen bolts & nuts as well as screws.

On this frame, services can be supported depending on area of use. For instance, in wet areas, plumbing pipes can be tied to the internal structure aluminium members sheets fix to the frame.

Subsequently, the Finishing panel of stone, tile or may be block board are positioned in the base channel which is fixed to the floor. This base channel has built-in skirting on both sides which gives an Aesthetic junction to the wall with floor and water proofing of the joint with silicon.

After this, the panels are positioned in plumb and line and the locking channel for individual panels is fixed at the top.

After finishing the installation of all the panels, the finishing top channel is fixed at the top. There is also possibility of giving bands of different material or color in the center in the system as well as to achieve grooves in tiles/stone panels.



typical specification
DRY WALL CLADDING PARTITION WALL
DWP01

Supply of greenpro certified IQUBX DWP01 modular fast installing dry wall cladding for fitting stone and tile panels of 18mm - 19mm thickness on to the existing wall surfaces.

Stone panels upto 19mm and tile panels made of tiles pasted on 9mm marine ply or board, or any other material as per client but with approx 19mm edges achieved by thickness of material or achieved by pasting additional material on edge. The finishing channel of approx 12 mm to be visible outside the surface of panel. Alternatively, panel to be crafted with main surface pasted with 19mm material behind in strips, to be accommodated in the grooves of base skirting channel and the lock channel, to effectively make horizontal grooves of 12 to 13 mm.

The dry wall cladding system to be made of base channel section for holding panels in floor with DWP01a rounded skirting integrated 47 x 20; horizontal fixing channel for individual panels DWP01d approx 35 x 40; top finishing channel DWP01e of approx 4 x 10 mm. The outside of panel surface shall be not more than 35 to 40 mm from the wall surface, with a gap of 15 mm from inside surface of panel to the frame. This cladding system including the stone to be 35mm to 40mm thick for panels without grooves and 55mm thick for paneling with grooves.

Alternatively, the horizontal cladding channel can be - top fixing channel DWP01b 68 x 31 and top finishing channel DWP01c 39 x 40, to allow more gap between the panel and the posts or wall surface - 35mm - to allow services to travel horizontally, if so required. This cladding system to be 65 to 70 mm thick including stone for paneling without grooves, and 85mm for panels with grooves.

Published Dec 2022



APPOINTING DISTRIBUTORS ALL OVER INDIA & OUTSIDE



IQUBX PVT LTD
Plot No 22, khasra no 27/10,
Industrial Area, Nangli Sakrawati,
Near Campa Cola Factory,
Najafgarh, New Delhi, 110043

www.iqubx.com
<https://www.facebook.com/iqubx/>
<https://www.linkedin.com/company/iqubx/>
<https://www.instagram.com/iqubx/>

Modular Green Building Furniture & Interior Systems

Mktg +91 9999001967, 8506074444, 7065444402 | info@iqubx.com
The only certified Green Products in their categories in India

We design customized solutions

Modular Aluminum Interior products

- Glass Partition Systems - Single, Double Glazed, DGU Glass
- Demountable Wall Partition & Paneling Systems
- Doors and Door Frames
- Free standing office cabin partitions & booths
- Dry Cladding Readymade Room Partition Walls (Drywall - Stone & Tiles)
- Modular Baffle Ceiling Systems (PATENT applied)
- Ceiling Trap Doors
- Work Stations, Modular table Leg Systems, Modular Partitions, Popup Boxes
- Misc: Skirting Board, Chair Rail, carpet transition profile, corner guard

Modular Aluminum Electrical products

- Floor Boxes, Floor Junction Boxes (PATENT applied), Raceways
- Floor Raceways Trunking Systems
- Cable Distribution & Termination - Open Frame Racks - 2 & 4 Poles, D Ring



certified by IGBC, CII

High performance & Functionality **Ultrafast installation** Minimum Human Labour
Highly customizable Modifiable **Relocatable** Minimum components

distributor



view auth distributor list online



DESIGNERS & MANUFACTURERS OF LARGEST NUMBER OF GREEN CERTIFIED MODULAR FURNITURE & INTERIOR SYSTEMS IN INDIA

www.iqubx.com



All copyrights, trademarks, Intellectual property rights, patents reserved in name of IQUBX pvt ltd and its directors. Any copying of logo, images, designs, product designs without explicit written permission of the directors of IQUBX pvt ltd shall be a punishable offence. All the product designs are IPR protected