

www.iqubx.com
[Connect on LinkedIn](#)



IQUBX WP061

MODULAR ALUMINIUM INTERLOCKING
CURVED PROFILE WALL PANELLING

Walls and partitions are paneled for aesthetics, lower maintenance, and to create focus areas.

Paneling is done by using materials as diverse as stone, tiles, wood, laminated ply, painted ply, glass, fabric, leather, veneer, metal etc.

Most of these are cost, time and labour intensive works.



IQUBX WP061

It is a very versatile, cost effective design for high quality aesthetic ambience. This paneling system can be used in various projects like offices, corporate interiors, retail, hospitals, clean areas and even homes as it is available in different finishes suited to different aesthetic requirements.

It can be used to install on straight, curved or wave wall surface or partitions.

IQUBX WP061 is a maintenance free durable system which can be assembled very quickly in a non-messy way. It replaces traditional wood panelling which was expensive and prone to damage by dampness and termites

It has indoor as well as outdoor application.



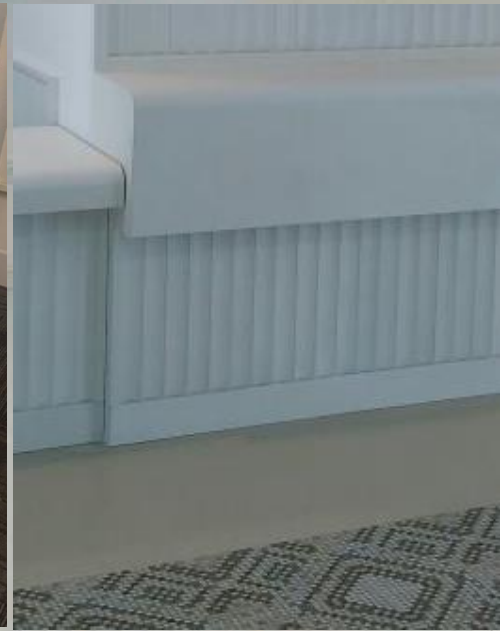
- **Modular design** – ready to install and assemble at site
- **Prefinished** - Being prefinished, it gives an amazing aesthetic appeal, quality of finish and does not require any finish after installation
- **Quality** - These sections are extruded with high quality aluminium in mechanized plants and finished with high specification coatings
- **Minimum assembly time** - Being prefinished and due to snapfit system, the assembly time is minuscule and completely non-messy.
- **Maintenance free** - Finished with durable finishes like anodizing or powder coating, it is maintenance free and long lasting. It replaces traditional wood or tile skirting which was prone to damage. Skirting can be removed and refitted with great ease for requirement of any maintenance.



IQUBX WP061 FEATURES

- **Holistic and innovative use** - Since it can be installed on various wall surfaces and partitions, it gives a very holistic aesthetic design appeal. It can be used in different spaces requiring different aesthetics. It can be innovatively used by mixing different finishes and colours to create very contemporary effects. It may even be combined with other finishes like coloured glass or paint finishes to produce striking effects
- **Ecofriendly** - Aluminium is among the most environmentally friendly metals on the planet with very low carbon footprint. Its production is environmentally friendly. On a percentage basis it is the most recycled of any industrial metal. It is a unique metal: strong, durable, flexible, impermeable, lightweight, corrosion-resistant and 100 percent recyclable (and that too infinitely). Aluminium products are highly reusable. It is an excellent material to use in LEED certified projects as it is part of global efforts to increase environmental safety and mitigate the climate change risks.

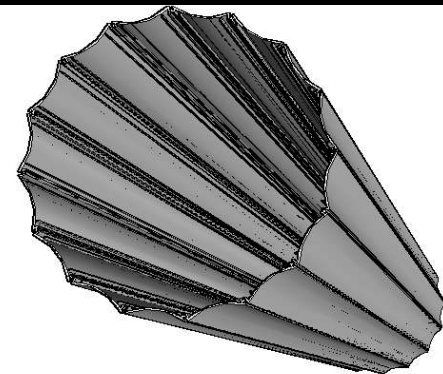
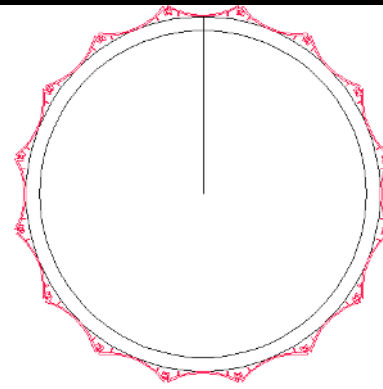
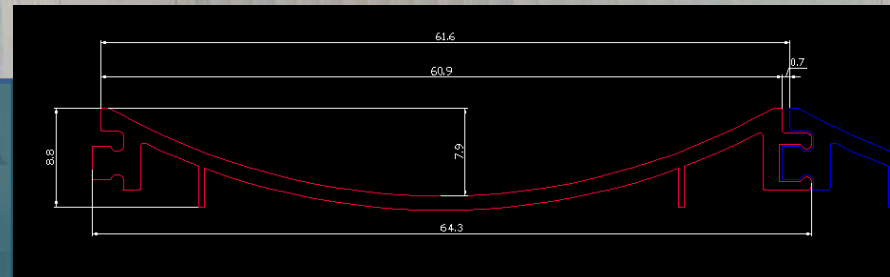




INNOVATIVE APPLICATIONS

This profile can be used to clad curved surfaces like columns or curved partitions. Minimum diameter of internal surface is app. 305 mm using 16 such panels.

Innovative use such as in table legs and reception desks is possible.



Technical data and price

IQUBX WP061

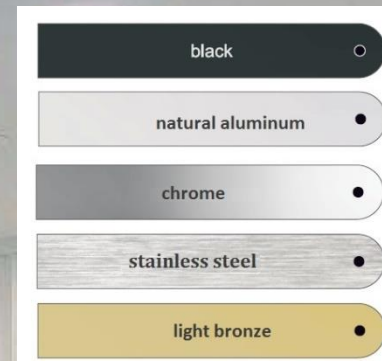
- 61.6 mm wide x 8.8 mm thick
- each 2400mm long profile covers 0.1478 sqm or 1.59 sqft of cladding area
- Order length
 - 2400, 3000, 3600 mm, standard length 2400 mm
 - special lengths upto 4800 mm on order
- Standard availability in raw aluminum finish
- INR 53 prft / INR 175 prm / INR 424 each (2400mm) **MRP**

To order

- Email info@iqubx.com, Call +91 9717291836 / 7065444402 / 8506074444

Specs for tenders

s.no.	specifications	qty	unit	rate	amount
1	supply and installation of interlocking aluminium curved profile wall panelling, IQUBX WP061		sqm / sqft		



www.iqubx.com

[Connect on LinkedIn](#)



INNOVATIVE
INTEGRATED
INTELLIGENT

OFFICE INTERIOR SYSTEMS

Designed and developed by architects and product designers, these products are unique and a part of integrated system solutions to comprehensively and holistically address the interior environment, especially for the work space.

An array of products including paneling system, modular and glazed partitions system, lighting and so on are under development.

www.iqubx.com
[Connect on LinkedIn](#)